

Détaché

Sebastian Lee op. 31

Largo

Musical notation for the first system, including a V-shaped bowing mark and a circled O below the staff.

5

5

*p*

Allegro

Musical notation for the third system, starting with a repeat sign.

3

3

5

5

7

7

9

9

11

11

13

13

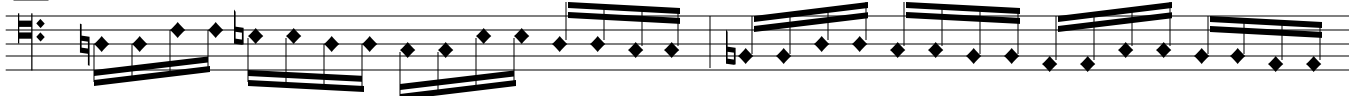
15

15

17

17

19



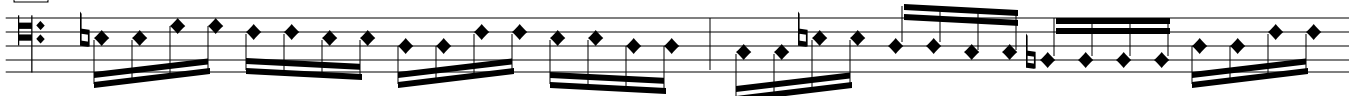
21



23



25



27



29



31



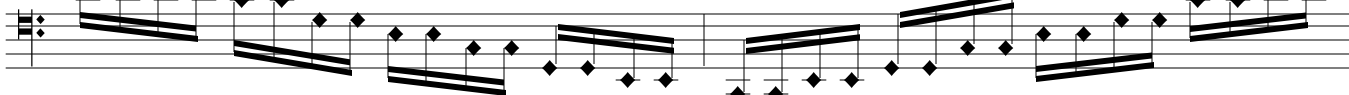
33



35



37



39

