

Sonate F-Dur

(Original Flötensonate C-Dur)

für Altblockflöte und
Cembalo oder Klavier

Andante

J. S. Bach (1685-1750)

Violoncello



④



⑧



⑬



Allegro



⑤



⑩



⑮



⑳



㉔



㉙



㉔



39



43



Adagio



4



9



Menuett 1



5



10



Menuett 2



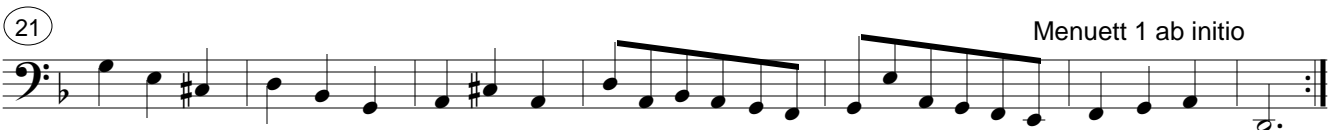
7



14



21



Sonate g-moll

(Original Flötensonate e-moll)

Adagio ma non tanto für Altblockflöte und Cembalo oder Klavier J. S. Bach (1685-1750)

3

6

9

12

15

19

23

26

Allegro

5

9

12



15



19



24



27



30



33



36



39



44



48



52



57



62



66



Andante

Musical score for the Andante section, bass clef, 3/4 time signature. The score consists of ten staves of music, each starting with a circled measure number: 1, 5, 10, 15, 20, 25, 30, 35, 40, and 50. The music features a steady eighth-note pattern with various rests and accidentals (sharps and naturals).

Allegro

Musical score for the Allegro section, bass clef, 3/4 time signature. The score consists of three staves of music, each starting with a circled measure number: 1, 6, and 12. The music is more rhythmic and complex, featuring sixteenth-note runs, slurs, and various rests.

17



21



26



33



40



44



49



54



59



63



68



74



80



Sonate G-Dur

(Original Flötensonate E-Dur)

für Altblockflöte und
Cembalo oder Klavier

J. S. Bach (1685-1750)

Violoncello

Musical score for Violoncello, measures 1-18. The score is written in bass clef with a key signature of one sharp (F#) and a common time signature (C). The music consists of a single melodic line with various rhythmic values and articulations. Measure numbers 2, 4, 6, 8, 10, 12, 14, 16, and 18 are circled at the beginning of their respective staves.

Allegro

Musical score for Violoncello, measures 19-21. The score is written in bass clef with a key signature of one sharp (F#) and a time signature of 2/4. The music consists of a single melodic line. Measure numbers 3 and 18 are circled at the beginning of their respective staves.

8



13



18



23



27



30



34



39



44



49



54



59



64



70



70



This image shows a page of musical notation for a bass line in G major. The notation is organized into 12 systems, each starting with a circled measure number. The key signature has one sharp (F#). The notation includes various rhythmic values such as quarter notes, eighth notes, and sixteenth notes, along with rests and accidentals. The piece concludes with a double bar line and repeat dots at the end of the final system.

Siziliano

Musical score for 'Siziliano' in bass clef, 6/8 time, key of D major. The score consists of seven staves of music. The first staff begins with a treble clef and a key signature of one sharp (F#). The tempo is marked 'Siziliano'. The music features a mix of eighth and sixteenth notes, with some rests and slurs. The first staff ends with a double bar line and repeat dots. The second staff is marked with a circled '3' and contains a triplet of eighth notes. The third staff is marked with a circled '7' and contains a group of seven sixteenth notes. The fourth staff is marked with a circled '11' and contains a group of eleven sixteenth notes. The fifth staff is marked with a circled '13' and contains a group of thirteen sixteenth notes. The sixth staff is marked with a circled '17' and contains a group of seventeen sixteenth notes. The seventh staff is marked with a circled '21' and contains a group of twenty-one sixteenth notes. The piece concludes with a double bar line and repeat dots.

Allegro assai

Musical score for 'Allegro assai' in bass clef, 3/4 time, key of D major. The score consists of six staves of music. The first staff begins with a treble clef and a key signature of one sharp (F#). The tempo is marked 'Allegro assai'. The music features a mix of eighth and sixteenth notes, with some rests and slurs. The first staff ends with a double bar line and repeat dots. The second staff is marked with a circled '3' and contains a triplet of eighth notes. The third staff is marked with a circled '7' and contains a group of seven sixteenth notes. The fourth staff is marked with a circled '12' and contains a group of twelve sixteenth notes. The fifth staff is marked with a circled '17' and contains a group of seventeen sixteenth notes. The sixth staff is marked with a circled '21' and contains a group of twenty-one sixteenth notes. The piece concludes with a double bar line and repeat dots.

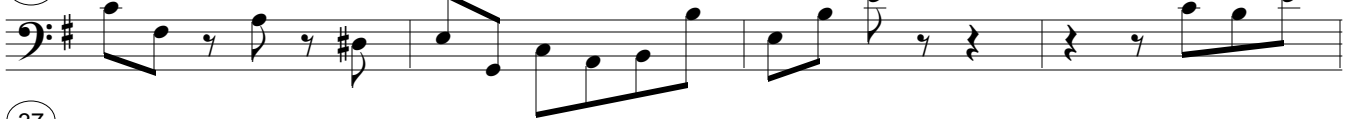
27



30



33



37



41



44



47

