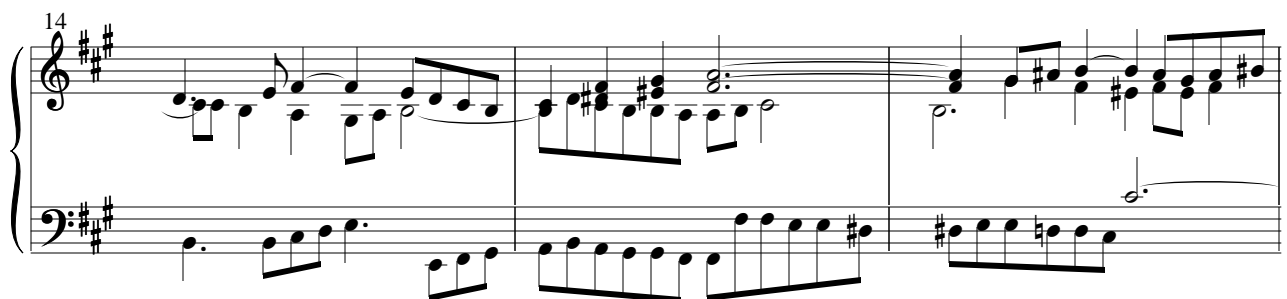
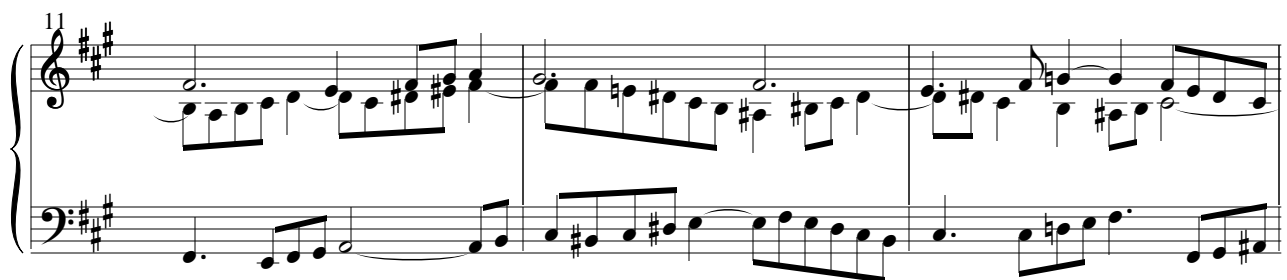
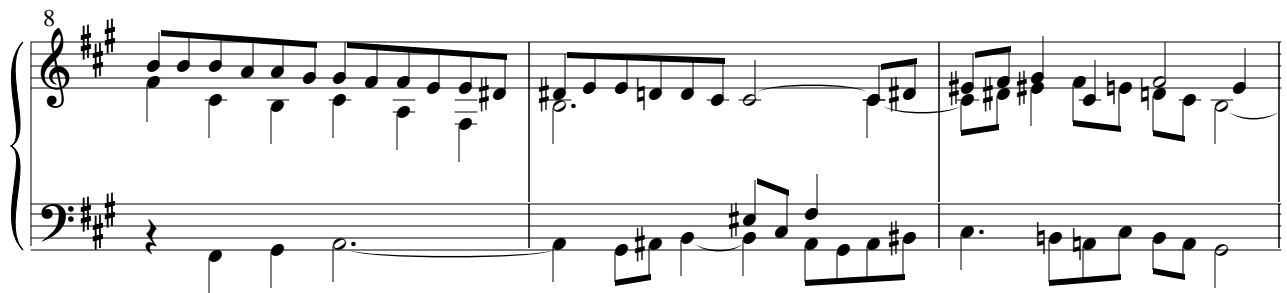


Fuge 14  
BWV 859



17

This system contains measures 17, 18, and 19. The key signature is three sharps (F#, C#, G#). The melody in the right hand features eighth and sixteenth notes, often beamed together. The left hand provides a steady accompaniment with eighth notes and some chords.

20

This system contains measures 20, 21, and 22. The musical texture continues with similar rhythmic patterns in both hands, maintaining the key signature of three sharps.

23

This system contains measures 23, 24, and 25. The right hand has more complex phrasing with slurs and ties, while the left hand continues its accompaniment.

26

This system contains measures 26, 27, and 28. In measure 28, the left hand has a whole rest, while the right hand continues with a melodic line.

29

This system contains measures 29, 30, and 31. The left hand resumes its accompaniment pattern, and the right hand continues with its melodic development.

32

This system contains measures 32, 33, and 34. The piece concludes with sustained chords in the right hand and moving lines in the left hand.

35

Measures 35-37 of a musical score in D major (two sharps). The piece is in 4/4 time. Measure 35 features a treble staff with a half note D5, a quarter note E5, and an eighth-note F#5, and a bass staff with a half note D4, a quarter note E4, and an eighth-note F#4. Measure 36 continues with similar patterns, including a half note G5 and a quarter note A5 in the treble, and a half note E4 and a quarter note F#4 in the bass. Measure 37 concludes with a half note D5 and a quarter note E5 in the treble, and a half note D4 and a quarter note E4 in the bass.

38

Measures 38-40 of the musical score. Measure 38 has a treble staff with a half note D5, a quarter note E5, and an eighth-note F#5, and a bass staff with a half note D4, a quarter note E4, and an eighth-note F#4. Measure 39 features a treble staff with a half note G5 and a quarter note A5, and a bass staff with a half note E4 and a quarter note F#4. Measure 40 ends with a treble staff containing a half note D5 and a quarter note E5, and a bass staff with a half note D4 and a quarter note E4.